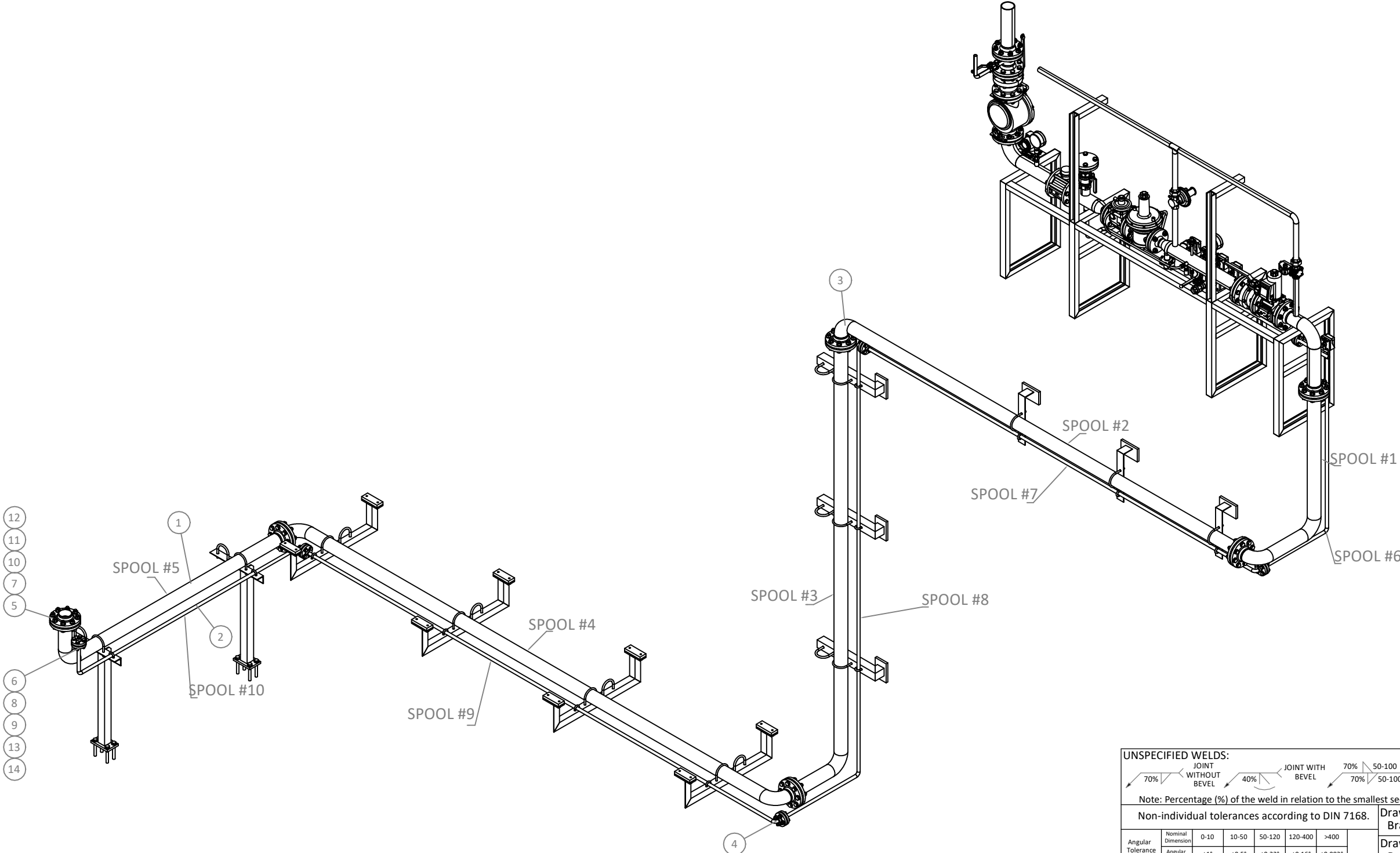


Nº	MATERIAL	QTY
1	PIPE DN80 THICKNESS 3.2MMS CS P235TR1 EN10216-1 (SEAMLESS)	17m
2	PIPE DN15 THICKNESS 2MMS CS P235TR1 EN10216-1 (SEAMLESS)	17m
3	ELBOW 90° DN80 THICKNESS 3.2MMS RADIUS 3D BW CS P265GH EN10253-1	7
4	ELBOW 90° DN15 THICKNESS 2MMS RADIUS 3D BW CS P265GH EN10253-1	7
5	WN FLANGE DN80 PN16 BW P235TR1 EN1092-1 TYPE 11 (DIN2633)	10
6	WN FLANGE DN15 PN16 BW P235TR1 EN1092-1 TYPE 11 (DIN2633)	10
7	GASKET DN80 PN16 3MMS DIN2690 KLINGERSIL C-4430	6
8	GASKET DN15 PN16 3MMS DIN2690 KLINGERSIL C-4430	6
9	BOLTS M12X55 8.8 DIN933 CS ZN	24
10	BOLTS M16X60 8.8 DIN933 CS ZN	48
11	NUTS M16 8 DIN934 CS ZN	48
12	GROWER WASHERS M16 DIN127 CS ZN	96
13	NUTS M12 8 DIN934 CS ZN	24
14	GROWER WASHERS M16 DIN127 CS ZN	48



UNSPECIFIED WELDS:

70%

JOINT WITHOUT BEVEL

40%

JOINT WITH BEVEL

70%

50-100

70%

50-100

REINFORCEMENT JOINT

80%

PIPE/PROFILE JOINT

40%

40%

PLATE SPLICING

Note: Percentage (%) of the weld in relation to the smallest section of the weld joint.

Non-individual tolerances according to DIN 7168.

Angular Tolerance	Nominal Dimension	0-10	10-50	50-120	120-400	>400	
	Angular Tolerance	±1°	±0,5°	±0,33°	±0,16°	±0,083°	
Linear Tolerance	Nominal Dimension	0-6	6-30	30-120	120-315	315-1000	>1000
	Linear Tolerance	±0,1	±0,2	±0,3	±0,5	±0,8	±1,2

Designation:

Natural Gas Route

Equipment:

TMT (FVRB-2,7-25)

Rev.

B

Drawn 3D:

Brajan IDDTEK.

Drawn 2D:

Brajan IDDTEK.

Date:

1/12/2025

N° Drawing:

2558-3321-TMT-ESR20

Scale

1:40

Weight (kg)

Sheet

1 of 3

Format

A2

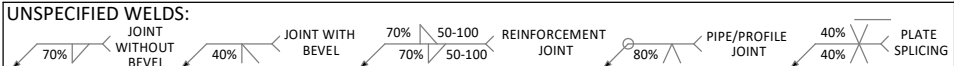
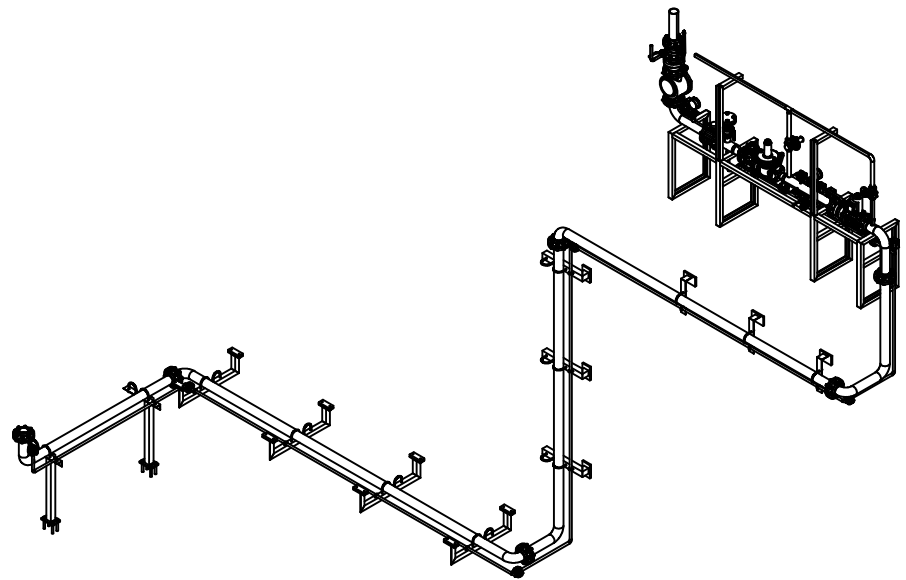
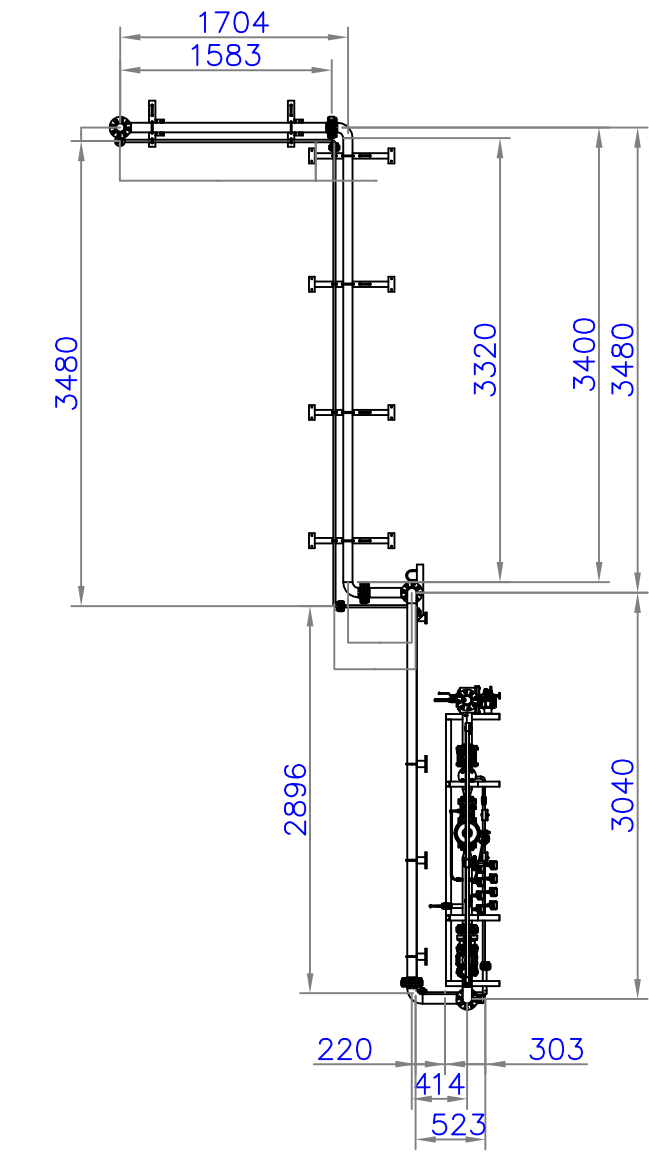
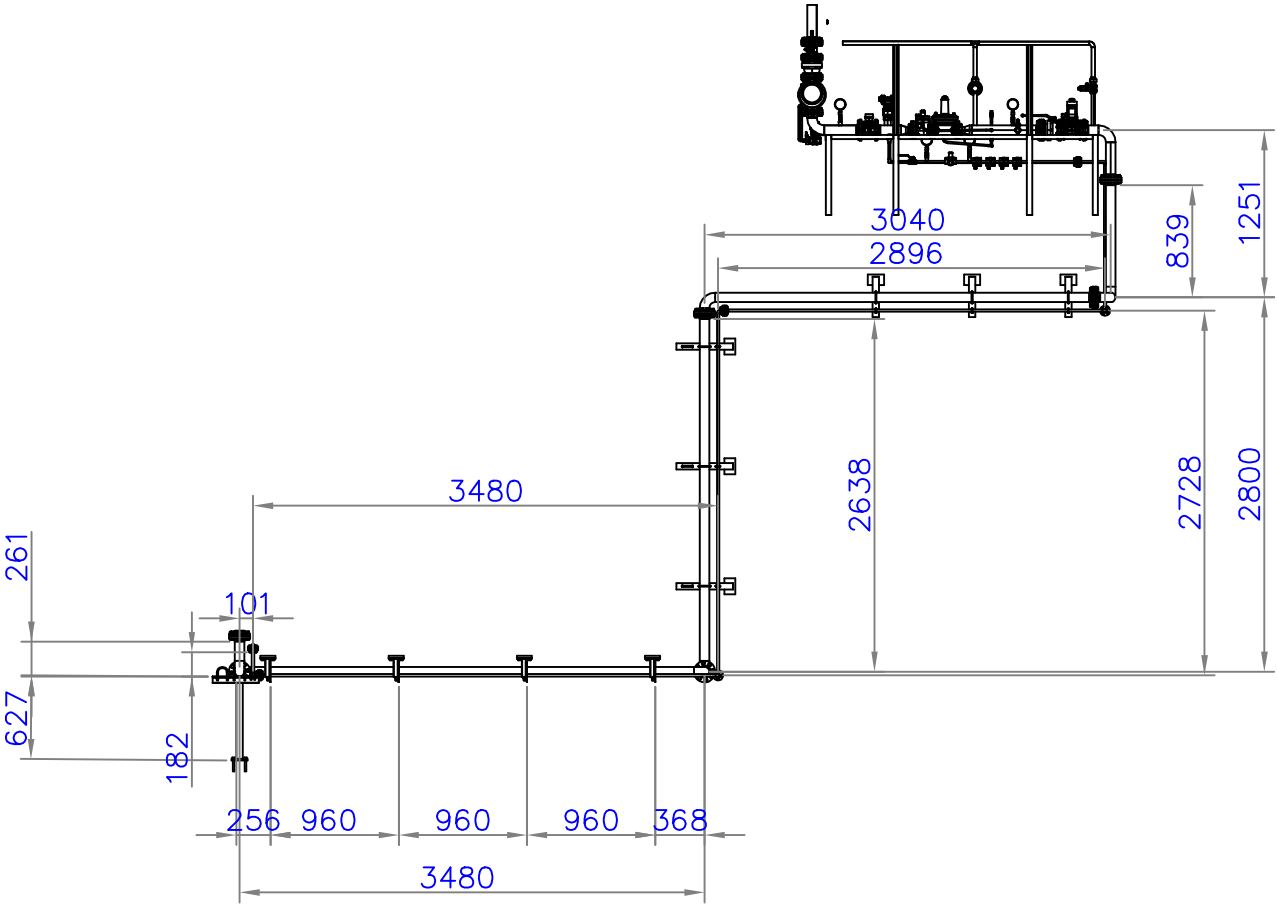
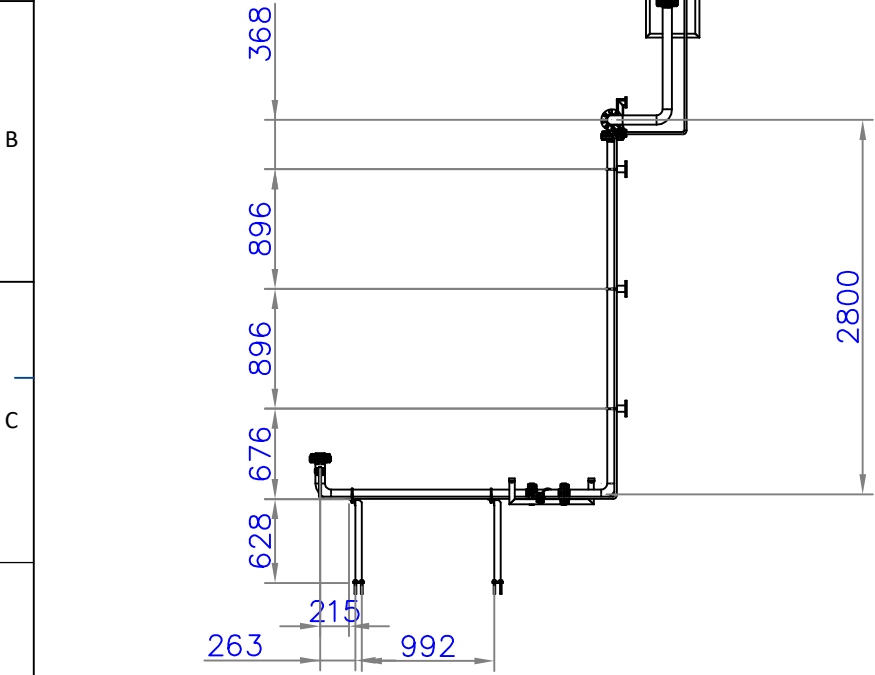
insertec


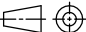
Furnaces & Refractories

1st Dihedral

ISO 5456-2

Balloon
Pos.
Qty.



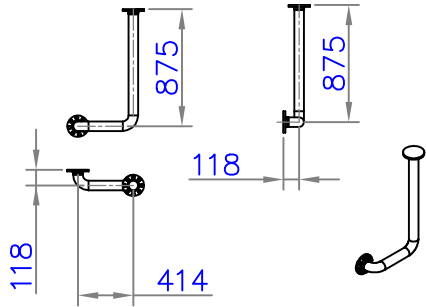
Note: Percentage (%) of the weld in relation to the smallest section of the weld joint.									
Non-individual tolerances according to DIN 7168.							Drawn 3D: Brajan IDDTEK.		
Angular Tolerance	Nominal Dimension	0-10	10-50	50-120	120-400	>400	Drawn 2D: Brajan IDDTEK.	 insertec Furnaces & Refractories	
	Angular Tolerance	±1°	±0,5°	±0,33°	±0,16°	±0,083°			
Linear Tolerance	Nominal Dimension	0-6	6-30	30-120	120-315	315-1000	Date: 1/12/2025	1st Dihedral  ISO 5456-2	
	Linear Tolerance	±0,1	±0,2	±0,3	±0,5	±0,8			
Designation: Natural Gas Route				Rev. B	N° Drawing: 2558-3321-TMT-ESR20				
Equipment: TMT (FVRB-2,7-25)					Scale 1:40	Weight (kg)	Sheet 2 of 3	Format A2	

This drawing belongs to IFI Industrial Furnaces INSERTEC and must not be used or reproduced without authorization.

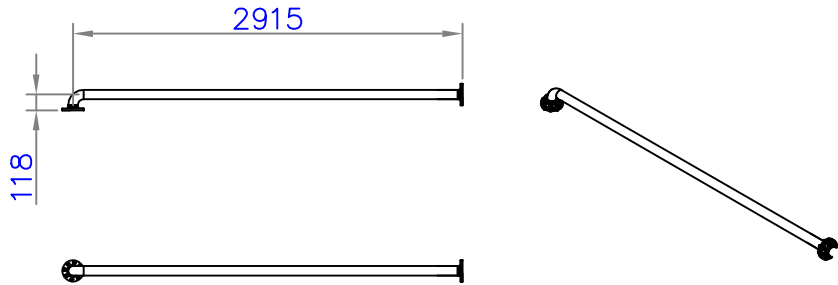
Before manufacturing this part, carefully review the drawing and clarify all doubts.

Balloon
Pos.
Qty.

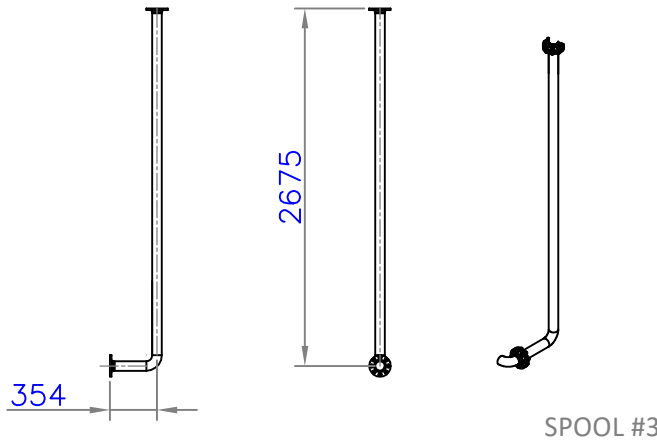
B



SPOOL #1

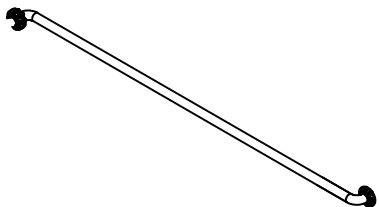


SPOOL #2

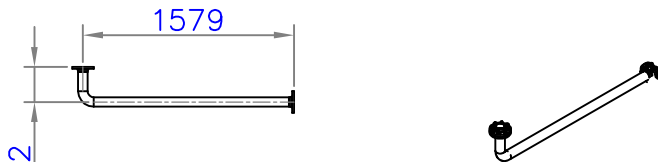


SPOOL #3

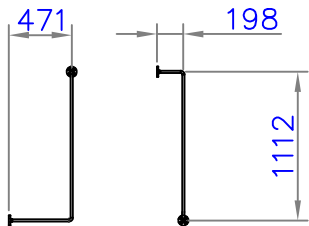
C



SPOOL #4

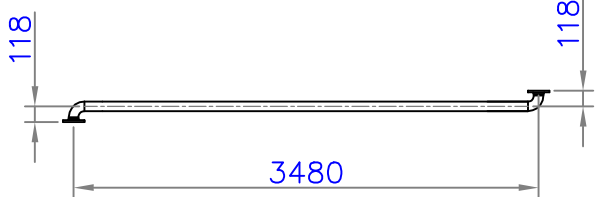


SPOOL #5

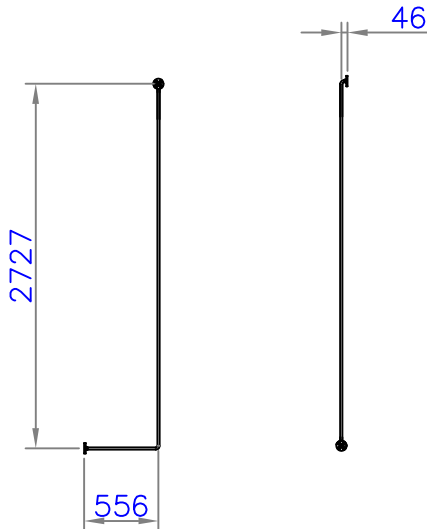


SPOOL #6

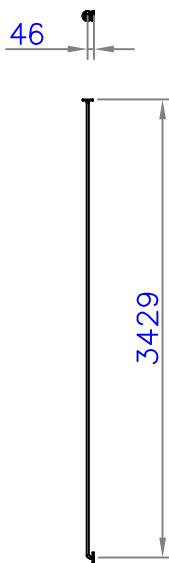
D



SPOOL #7

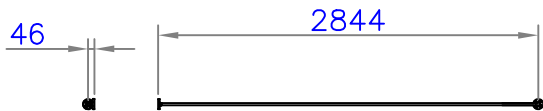


SPOOL #8



SPOOL #9

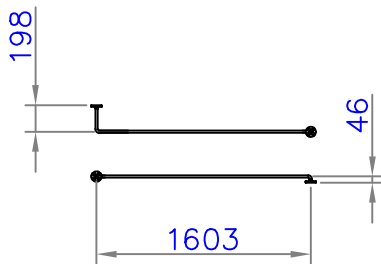
E



SPOOL #10

F

G





H

This drawing belongs to IFI Industrial Furnaces INSERTEC and must not be used or reproduced without authorization.

UNSPECIFIED WELDS:

JOINT WITHOUT BEVEL 70% 40% JOINT WITH BEVEL 70% 40% REINFORCEMENT JOINT 70% 40% PIPE/PROFILE JOINT 40% 40% PLATE SPLICING

Note: Percentage (%) of the weld in relation to the smallest section of the weld joint.

Non-individual tolerances according to DIN 7168.						Drawn 3D: Brajan IDDTEK.		 Furnaces & Refractories	
Angular Tolerance	Nominal Dimension	0-10	10-50	50-120	120-400	>400	Drawn 2D: Brajan IDDTEK.		
	Angular Tolerance	±1°	±0,5°	±0,33°	±0,16°	±0,083°	Date: 1/12/2025	1st Dihedral  ISO 5456-2	
Linear Tolerance	Nominal Dimension	0-6	6-30	30-120	120-315	315-1000	>1000		
	Linear Tolerance	±0,1	±0,2	±0,3	±0,5	±0,8	±1,2		

Designation:
Natural Gas Route

Equipment:
TMT (FVRB-2,7-25)

Rev. **B**

N° Drawing:
2558-3321-TMT-ESR20

Scale 1:40	Weight (kg)	Sheet 3 of 3	Format A2
---------------	-------------	-----------------	--------------

1

2

3

4

5

6

7

8

9

10